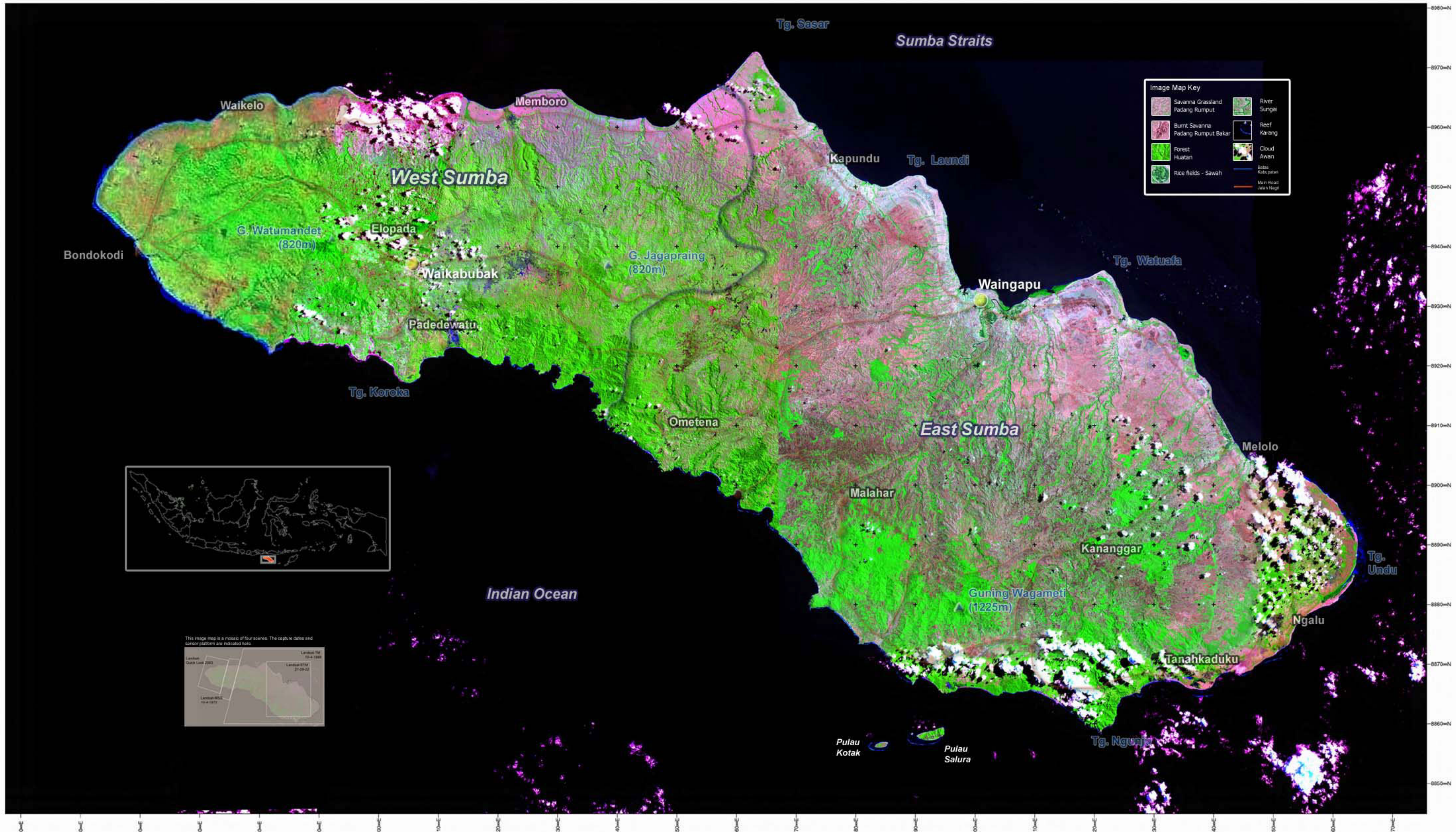
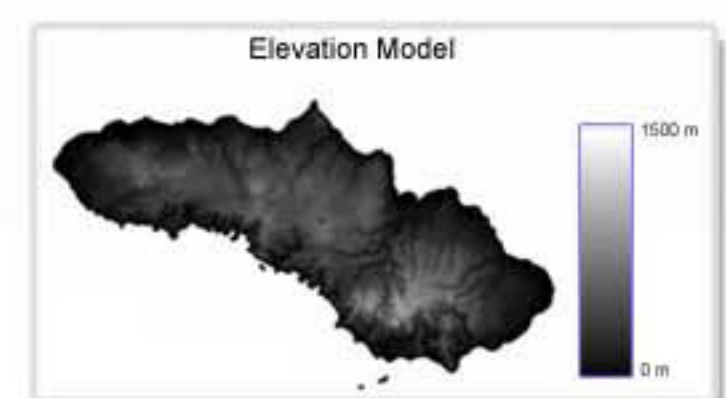


Sumba - Satellite Image Map



This image map is a mosaic of four scenes. The capture dates and sensor platform are indicated here.

Latitude 101° 04' 1988
Latitude 101° 21' 09-22
Latitude 101° 10' 1975



This poster has been produced as part of the Australian Government funded project: Impacts of fire and its use for sustainable land management in eastern Indonesia and northern Australia.

Northern Australia and NTT have many similarities in relation to fire management issues, especially given the geographic contact of savanna fires. In NTT and northern Australia, a key common issue concerns the appropriate application of the management in pastoral production.

It is possible to use on this satellite image map of Sumba the extent of the savanna grass lands.



This project is funded by the Australian Centre for International Agricultural Research and managed through the Charles Darwin University - Darwin.

In Indonesia the project is administered from Waingapu (West Sumba) and Bajawa (Ngada regency, Flores) with the assistance of Vito Volcani University (Sumba) and the Provincial Development Planning Board for East Nusa Tenggara, (DIPPLDA NTT).

