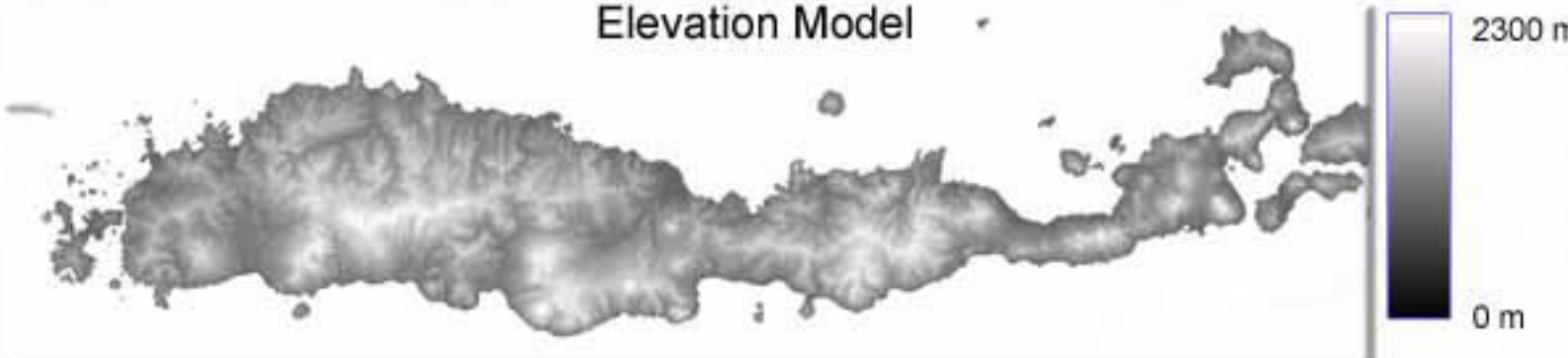
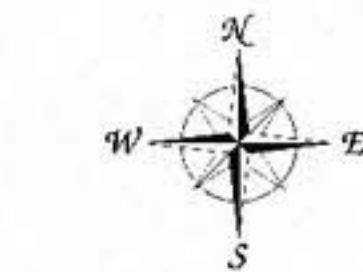
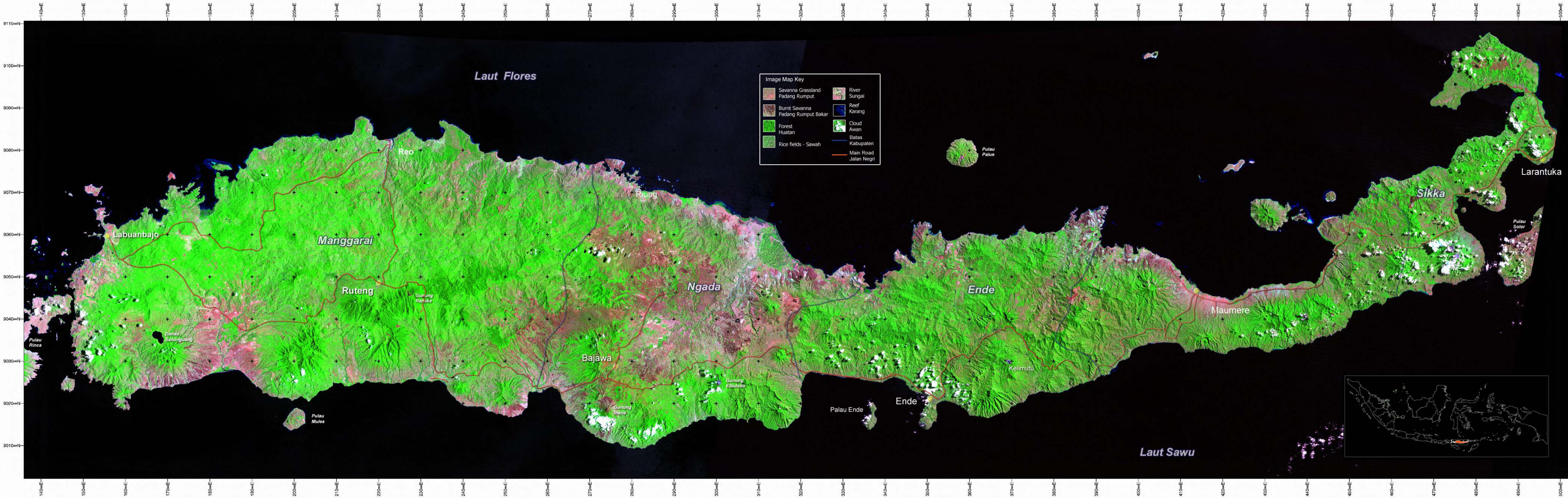
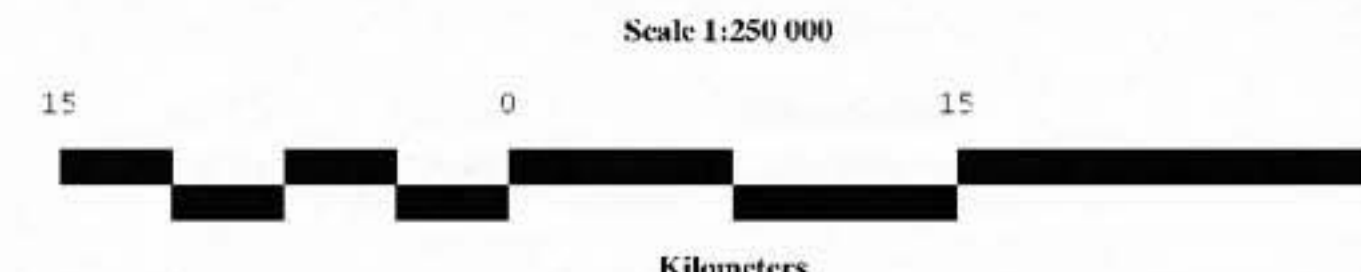


# Flores - Satellite Image Map



Lansat-TM image mosaic.  
Path/Row: Date:  
113/66 14-10-1996  
112/66 10-8-1996  
Bands: 3,4,7  
Datum: WGS84



This poster has been produced as part of the Australian Government funded project:  
**Impacts of fire and its use for sustainable land management in eastern Indonesia and northern Australia.**  
Northern Australia and NTT have many similarities in relation to fire management issues, especially given the geographical/climatic context of savanna fires. In NTT and northern Australia, a key common issue concerns the appropriate application of fire management in pastoral production.  
It is possible to see on this satellite image map of Flores the extent of the savanna grass lands and fire from late in the dry season of 1996.



This project is funded by the Australian Centre for International Agricultural Research and managed through the Charles Darwin University - Darwin.  
In Indonesia the project is administered from Waingapu (West Sumba) and Bajawa (Ngada regency, Flores) with the assistance of Wira Wacana University (Sumba) and the Provincial Development Planning Board for East Nusa Tenggara. (BAPPEDA NTT)

